



CUSTOM HOLLOW METAL DOORS AND FRAMES

The MPI Group, LLC
319 North Hills Road
Corbin, KY 40701
www.mpigroupllc.com

- DISTRIBUTED BY -

Project Name: _____

Location: _____

Architect: _____

Contractor: _____

Drawing Date: _____ By: _____

Revised: _____

Reference No: _____



NATIONAL ASSOCIATION OF
ARCHITECTURAL METAL MANUFACTURERS



HOLLOW METAL MANUFACTURERS
ASSOCIATION

FRAMES

Frame Gauge:

Interior- A60 _____ CRS _____ G90 _____
 Exterior- A60 _____ CRS _____ G90 _____

Jamb Anchor Gauge: _____ Per Jamb

Floor Anchor Gauge: _____ Adjustable

Channel Head Reinf.- _____ gauge @frames over _____ " wide.

Standard Face Weld Weld Full Depth & Width

12 Ga. Closer Reinf. _____ Ga. Closer Reinf.

7 Ga. Hinge Reinf. _____ Ga. Hinge Reinf.

11 Ga. Strike Reinf. _____ Ga. Strike Reinf.

Hospital Stops _____ " @ _____ °

DOORS

Door Gauge:

Interior- A60 _____ CRS _____ G90 _____
 Exterior- A60 _____ CRS _____ G90 _____

Tack & Fill Seamless Edges

Continuously Welded Edge Seams

7 Ga. Hinge Reinf. _____ Ga. Hinge Reinf.

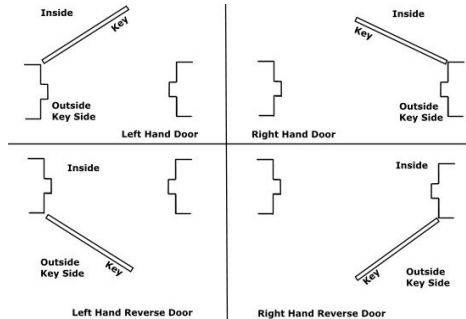
11 Ga. Lock Reinf. _____ Ga. Lock Reinf.

_____ Ga. Stiffeners Polystyrene Core

Close Tops Flush At Exterior Doors Sealed

HARDWARE LOCATIONS - MPI STANDARD _____

DOOR AND FRAME HANDING CHART



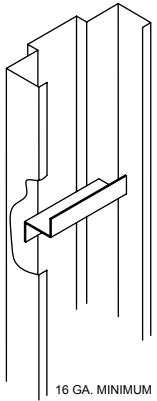
Special Notes: _____

MPI

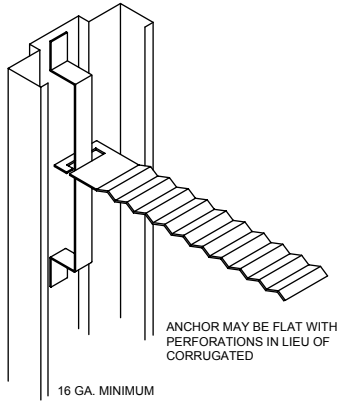
MATERIAL SPECIFICATIONS

Drawn By: _____ Date: _____

Sheet _____ of _____

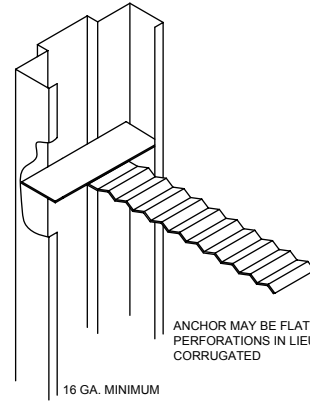


16 GA. MINIMUM
METAL STUD ANCHOR
(MSA)



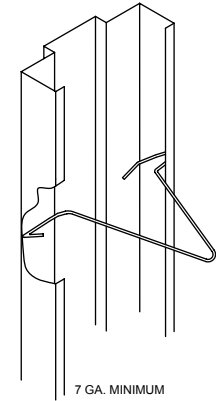
16 GA. MINIMUM
MASONRY ANCHOR
(MAS)

ANCHOR MAY BE FLAT WITH PERFORATIONS IN LIEU OF CORRUGATED

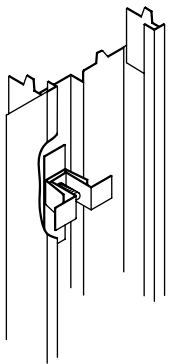


16 GA. MINIMUM
MASONRY T-ANCHOR
(MTA)

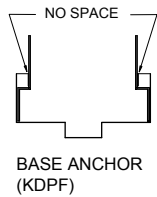
ANCHOR MAY BE FLAT WITH PERFORATIONS IN LIEU OF CORRUGATED



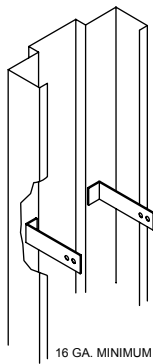
7 GA. MINIMUM
MASONRY WIRE ANCHOR
(MWA)



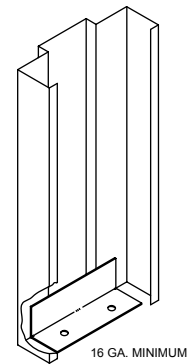
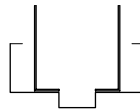
COMPRESSION ANCHOR
(KDPF)



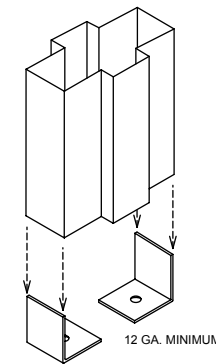
NO SPACE
BASE ANCHOR
(KDPF)



16 GA. MINIMUM
WOOD STUD ANCHOR
(WSA)



16 GA. MINIMUM
WELDED FLOOR CLIP
(WFC)



12 GA. MINIMUM
MULL BASE ANCHOR
(MBA)

MPI

FRAME ANCHORS

Drawn By: _____ Date: _____

Sheet _____ of _____

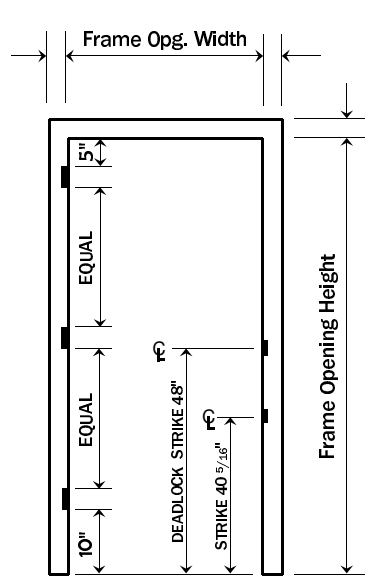
Mark Number	Qty	Location	To/ From	Location	Ext ✓	Hand	Open Width	Open Height	Jamb TypeL	Jamb TypeR	Head Type	Jamb Depth	Anch JambL	Anch JambR	Fr Elev	Fr Ga	Dr Act	Dr Ina	Dr Ga	Dr Thk	Label	Remarks	Hdw Hdg	

NOTE: USE "Jamb TypeR" AND "Head Type" ONLY IF DIFFERENT FROM "Jamb TypeL". USE "Anch JambR" ONLY IF DIFFERENT FROM "Anch JambL".

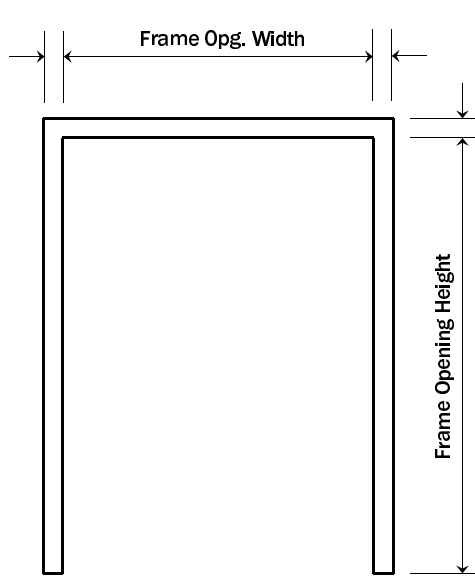
MPI

OPENING SCHEDULE

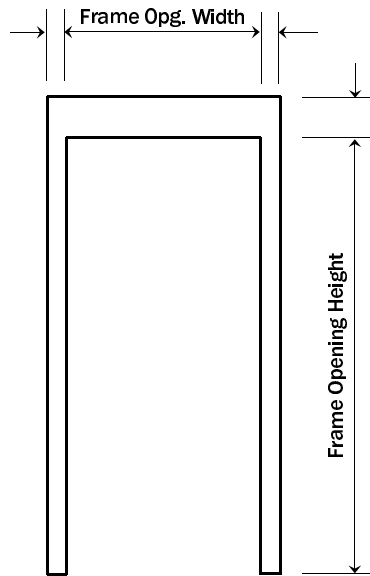
Drawn By: _____ Date: _____ Sheet _____ of _____



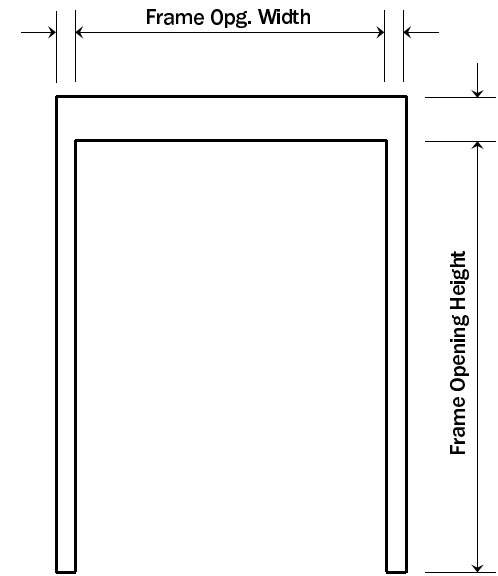
101



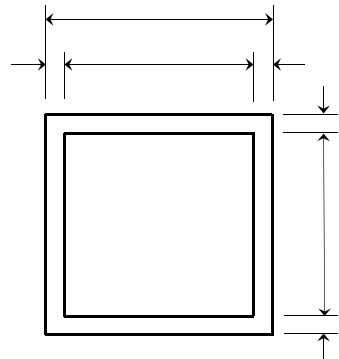
102



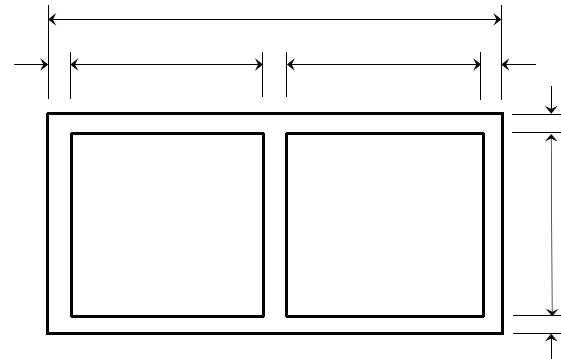
101A



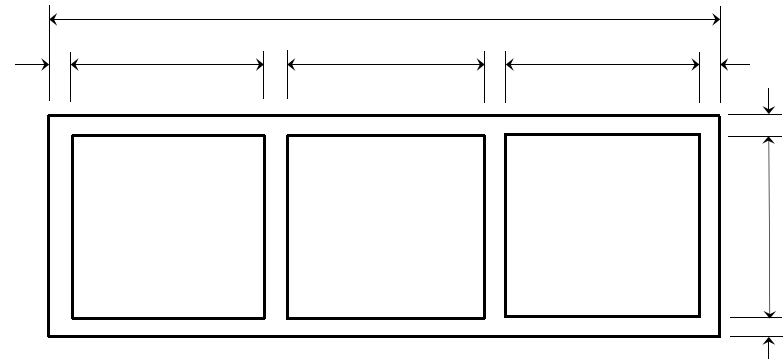
102A



VW1 _____" THK. GLAZING, BY OTHERS



VW2 _____" THK. GLAZING, BY OTHERS



VW3 _____" THK. GLAZING, BY OTHERS

F. Flr.

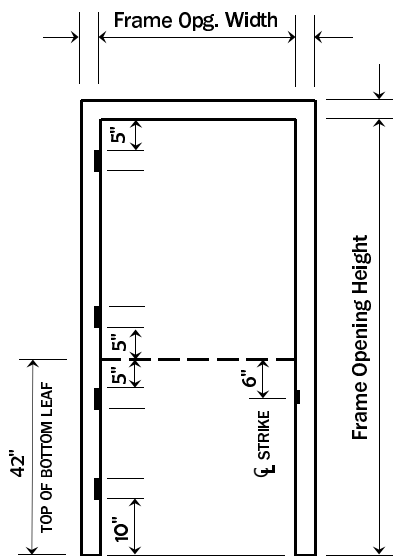
MPI

STANDARD FRAME ELEVATIONS

DWG. N.T.S.

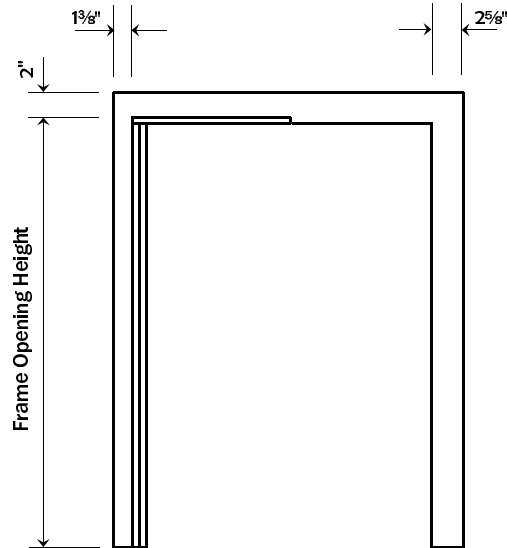
Drawn By: _____ Date: _____

Sheet _____ of _____



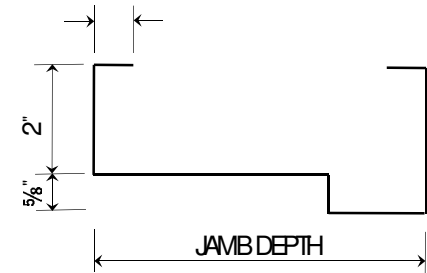
MPI STANDARD DUTCH DOOR FRAME

103

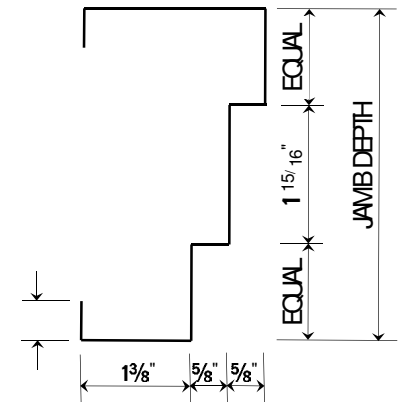


MPI STANDARD DOUBLE EGRESS FRAME

104



DOUBLE EGRESS HEAD



DOUBLE EGRESS JAMB

"DE"

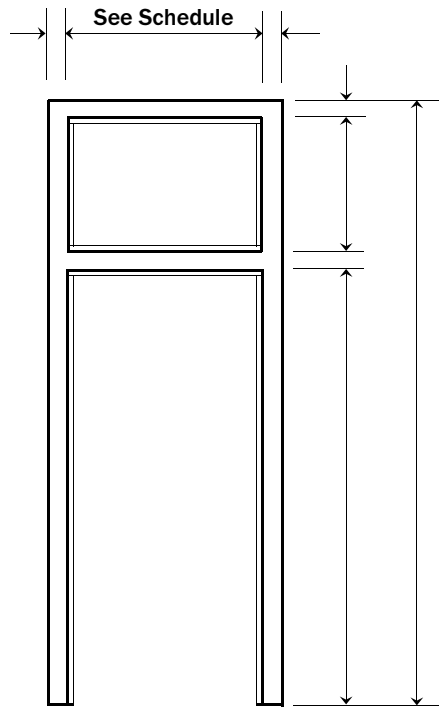
MPI

DUTCH DOOR FRAME & DOUBLE EGRESS FRAME

DWG. N.T.S.

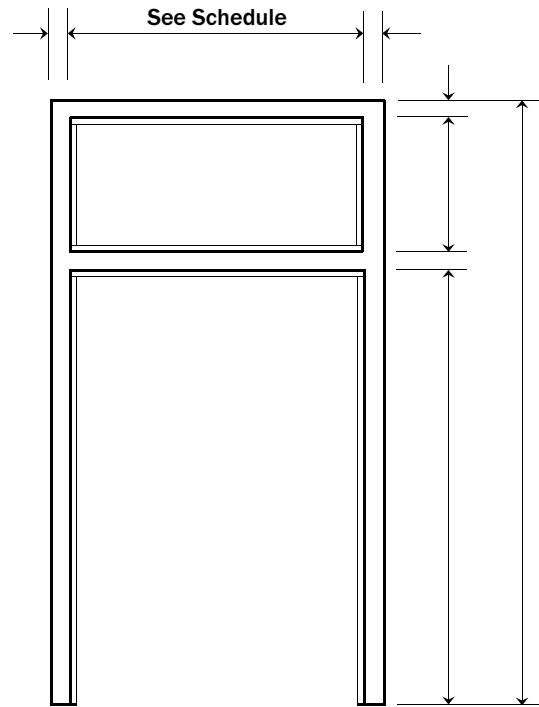
Drawn By: _____ Date: _____

Sheet _____ of _____



105

_____" THK. GLAZING,
BY OTHERS.
GLASS BEAD LOCATED-
 ON DOOR SIDE
 OPP. DOOR SIDE



106

_____" THK. GLAZING,
BY OTHERS.
GLASS BEAD LOCATED-
 ON DOOR SIDE
 OPP. DOOR SIDE

MPI

STANDARD TRANSOM FRAME ELEVATIONS

DWG. N.T.S.

Drawn By: _____ Date: _____

Sheet _____ of _____



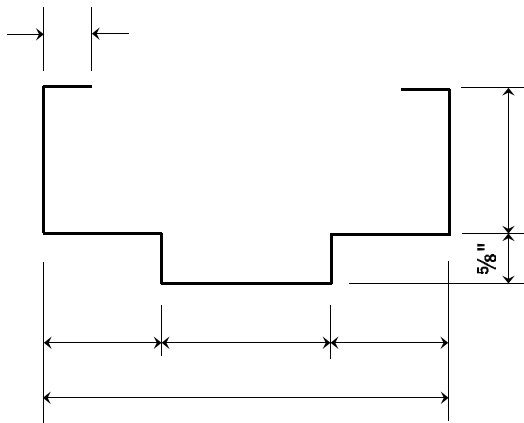
MPI

SPECIAL FRAME ELEVATIONS

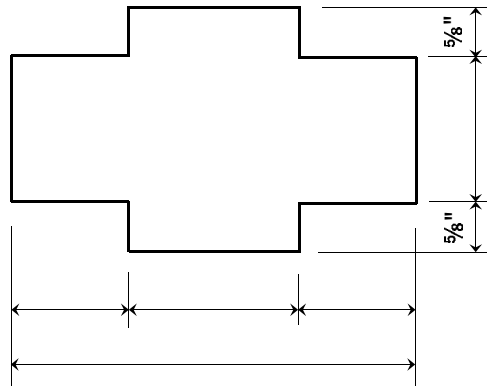
DWG. N.T.S.

Drawn By: _____ Date: _____

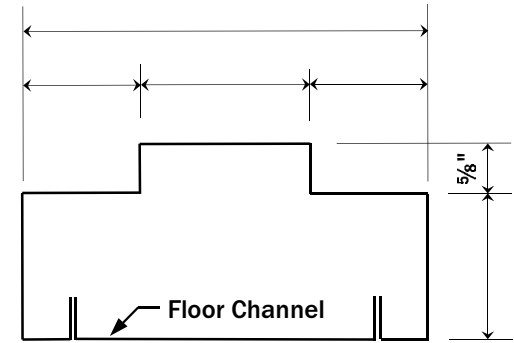
Sheet _____ of _____



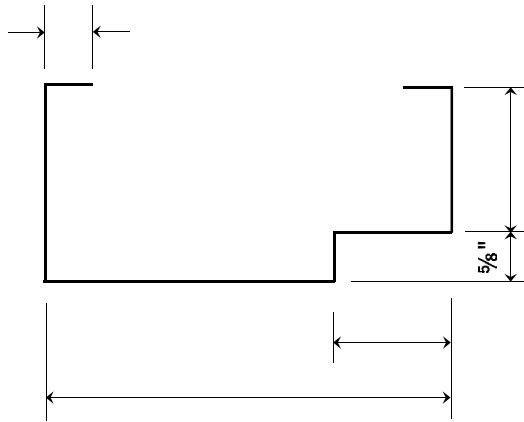
"A"



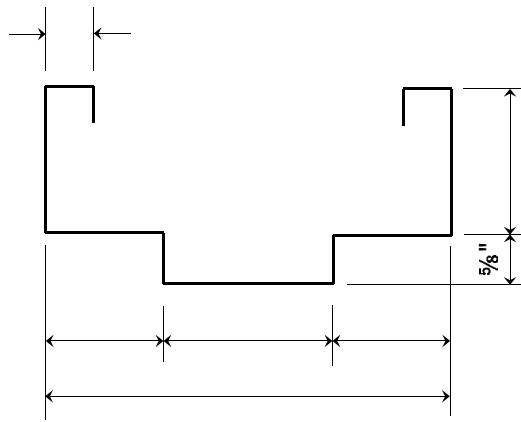
"B"



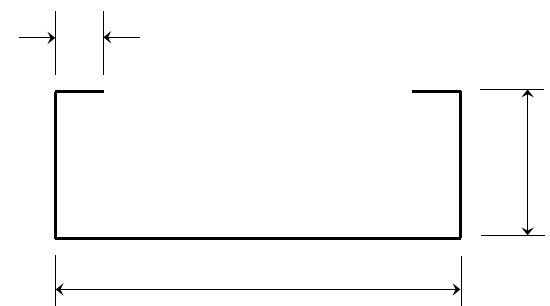
"E"



"F"



"G"



"J"

MPI

STANDARD JAMB TYPES

DWG. N.T.S.

Drawn By: _____ Date: _____

Sheet _____ of _____



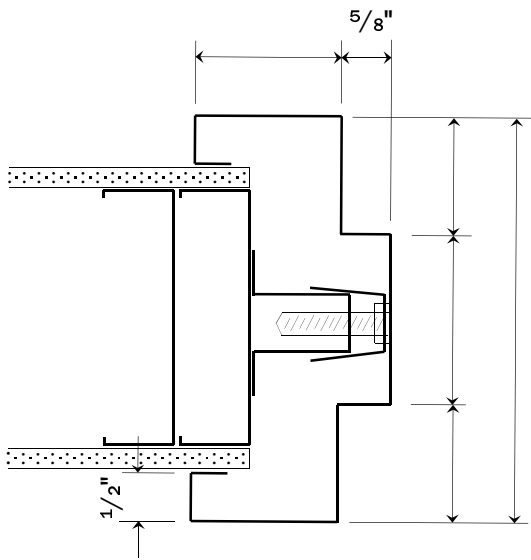
MPI

SPECIAL DETAILS

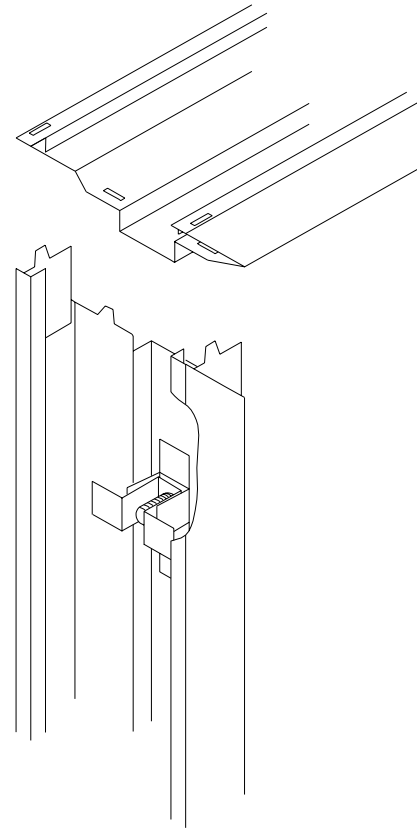
DWG. N.T.S.

Drawn By: _____ Date: _____

Sheet _____ of _____



"K"



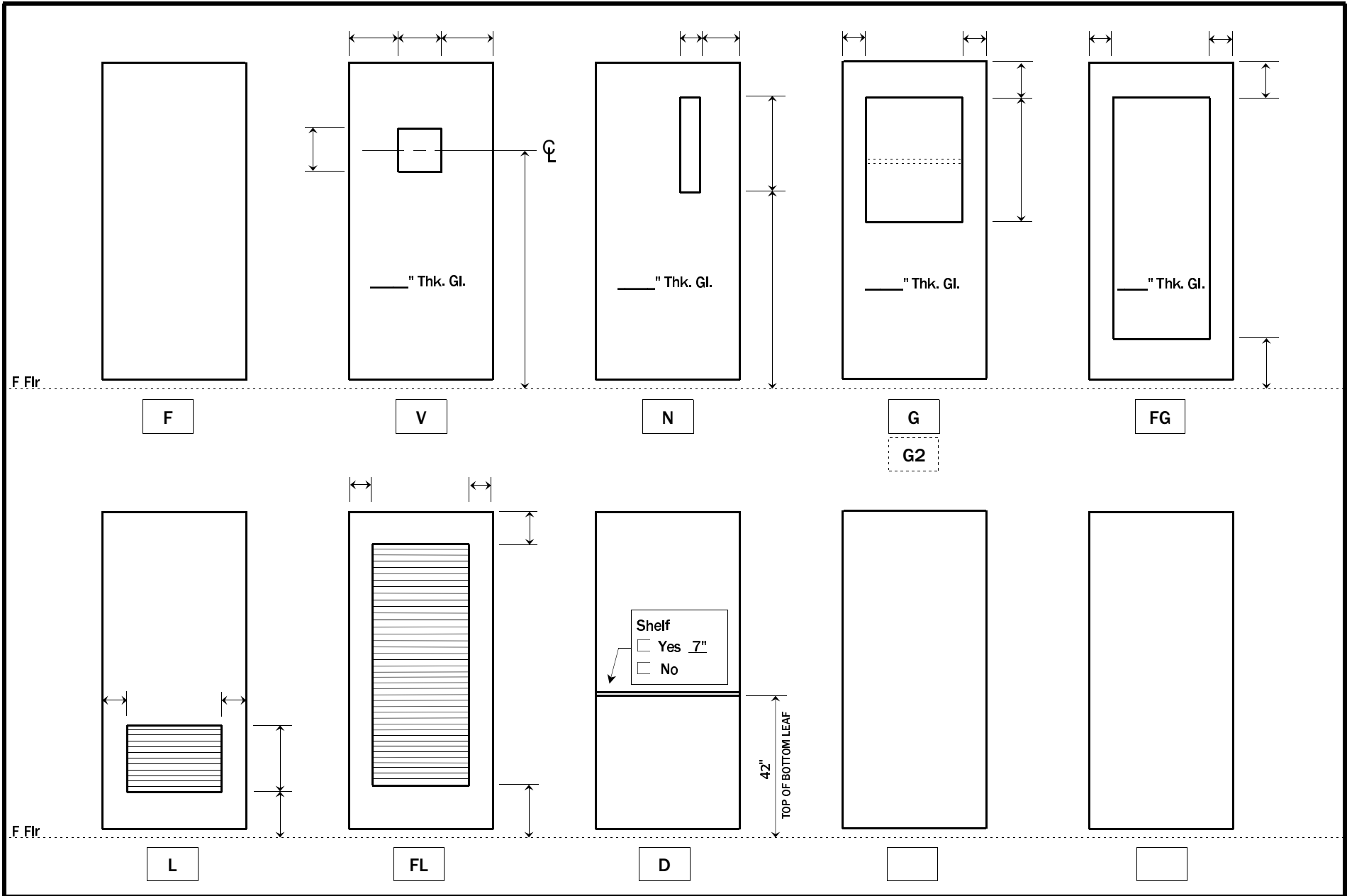
MPI

KD DRYWALL PRESSURE FIT FRAME DETAILS

DWG. N.T.S.

Drawn By: _____ Date: _____

Sheet _____ of _____



MPI

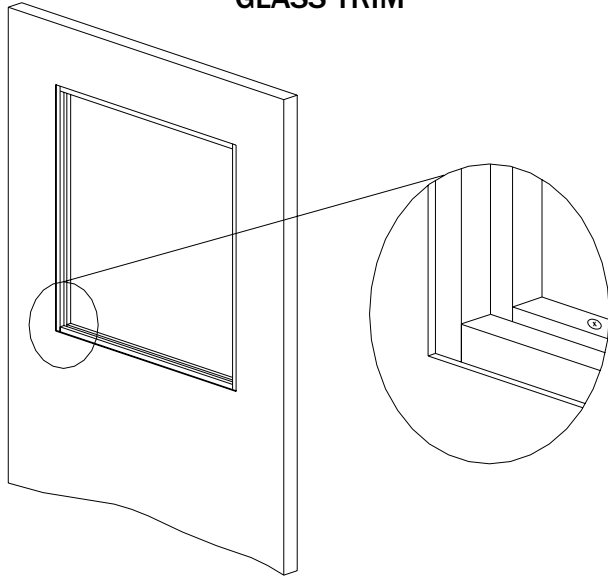
STANDARD DOOR ELEVATIONS

DWG. N.T.S.

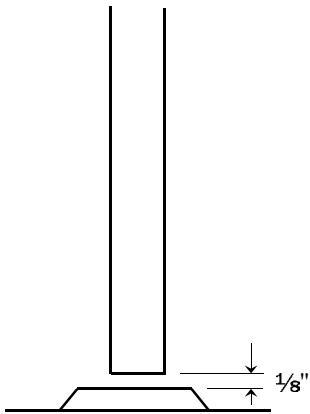
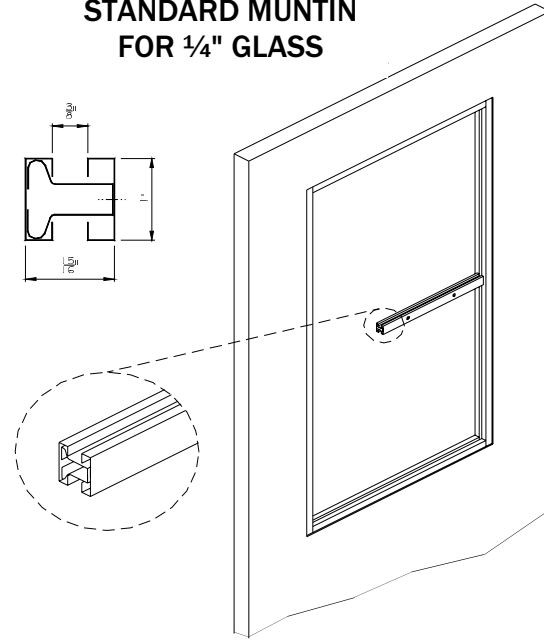
Drawn By: _____ Date: _____

Sheet _____ of _____

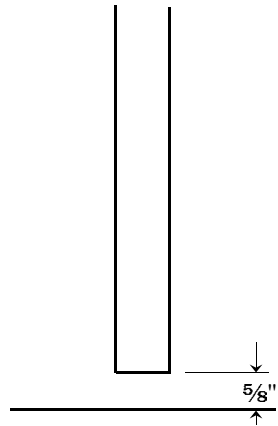
**STANDARD DOOR
GLASS TRIM**



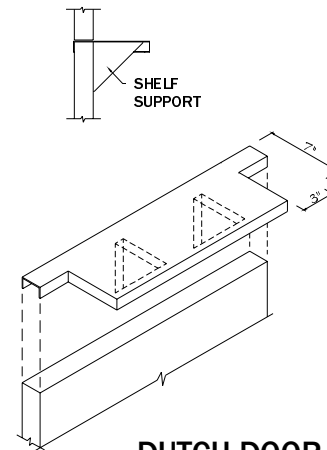
**STANDARD MUNTIN
FOR 1/4" GLASS**



UNDERCUT ABOVE THRESHOLD



UNDERCUT NO THRESHOLD



DUTCH DOOR SHELF

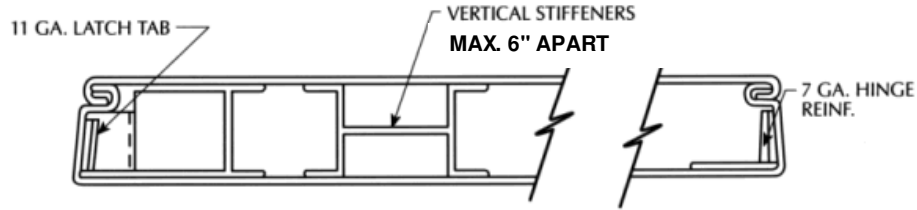
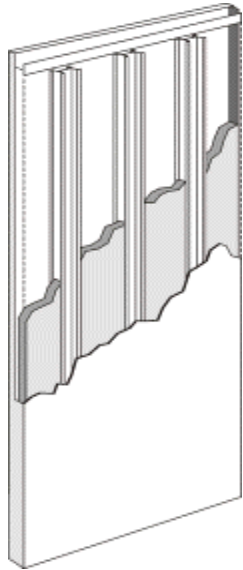
MPI

STANDARD DOOR DETAILS

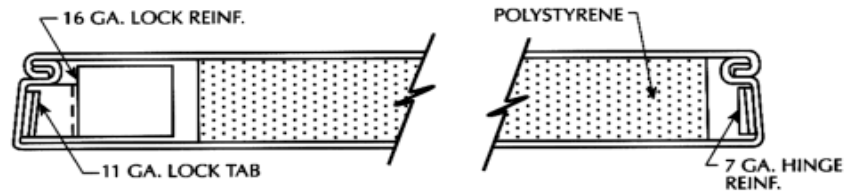
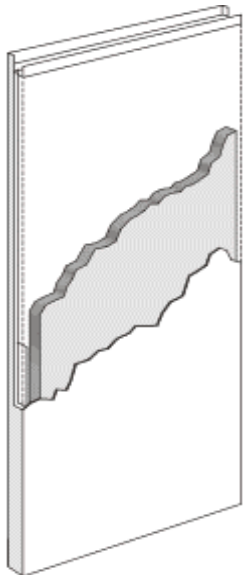
DWG. N .T.S.

Drawn By: _____ Date: _____

Sheet _____ of _____



STEEL STIFFENED DOOR



POLYSTYRENE CORE DOOR

STANDARD DOOR SPECIFICATIONS

FACE SHEET GAUGE	14, 16, 18
THICKNESS	1 ³ / ₄ "
EDGE SEAM	*
TOP & BOTTOM	CONT. 16GA. CHANNEL
GLASS TRIM	WELDED FLUSH TRIM
LOUVER	WELDED BLADE CONST
LOCK REINF.	11GA.
HINGE REINF.	7GA.
SURF. HDWE. REINF.	14GA.

* WELDED, FILLED & FINISHED SMOOTH IS STANDARD.
 OPEN SEAM AVAILABLE ONLY IN 18GA.
 OPTIONAL CONTINUOUSLY WELDED EDGE SEAM AVAILABLE.

MPI

DOOR CONSTRUCTION DETAILS

DWG. N.T.S.

Drawn By: _____ Date: _____

Sheet _____ of _____